

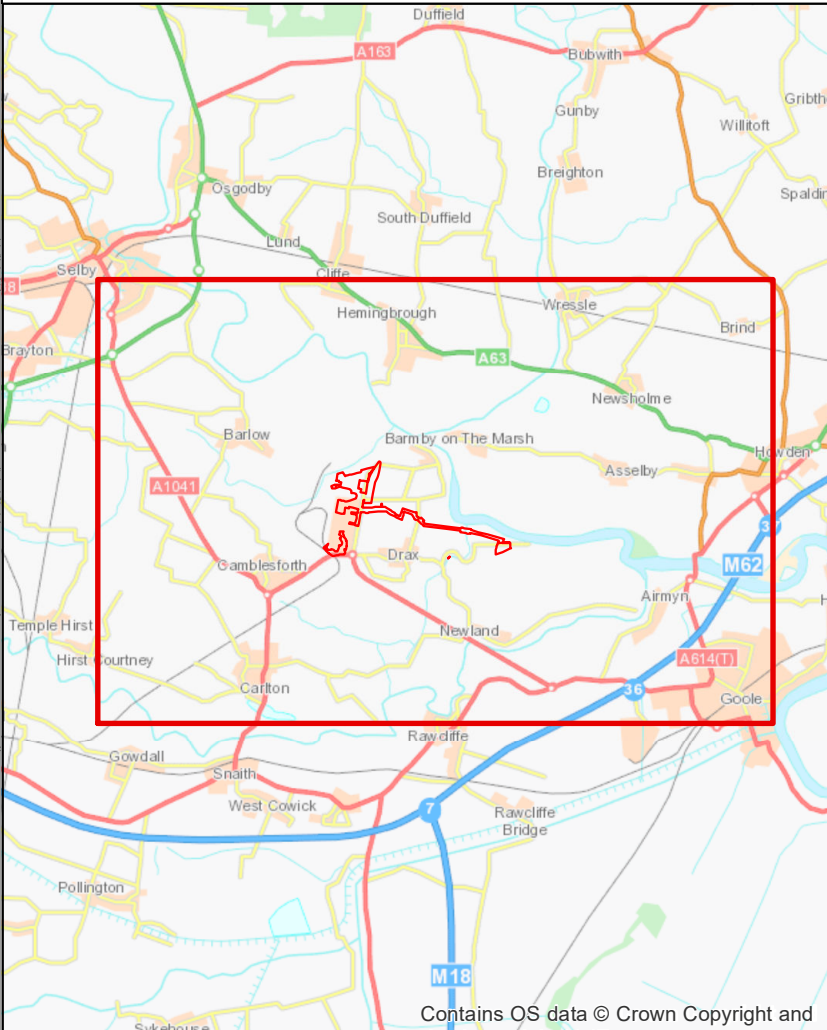


**The Drax Power (Generating Stations) Order  
Land Plans  
Key Plan**

-  Order limits - the area within which the authorised development may be carried out
-  Sheet Number

Reproduced from Ordnance Survey digital map data © Crown copyright 2016. All rights reserved. Licence number 0100031673.  
© Crown copyright material is reproduced with the permission of Land Registry under delegated authority from the Controller of HMSO.  
This material was last updated in June 2017 and may not be copied, distributed, sold or published without the formal permission of Land Registry. Only an official copy of a title plan or register obtained from the Land Registry may be used for legal or other official purposes.  
May contain public sector information licensed under the Open Government Licence v 3.0.



Contains OS data © Crown Copyright and database right 2017

Infrastructure Planning (Applications: Prescribed Forms and Procedure) Regulations 2009 - Regulation 5(2)(i)

DRAWING STATUS: SUBMISSION FOR APPROVAL

**wsp**

Westbrook Mills, Borough Road, Goddams, GL17 2AZ, UK  
T: +44 (0) 1483 528 400, F: +44 (0) 1483 528 889  
wsp.com

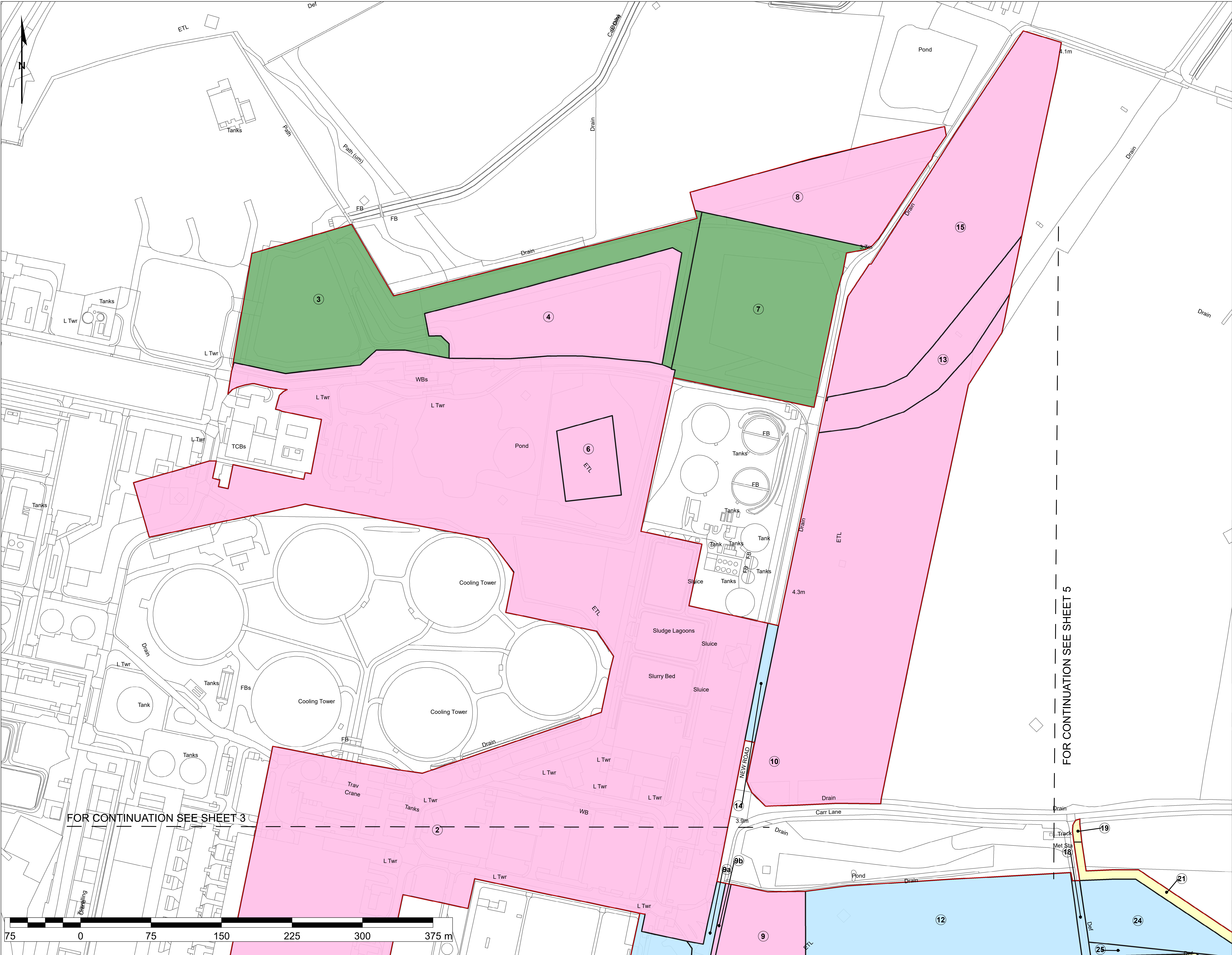
**drax**

The Drax Power  
(Generating Stations) Order

Application document reference 2.2  
Land Plans  
Key Plan- Sheet 1 of 9

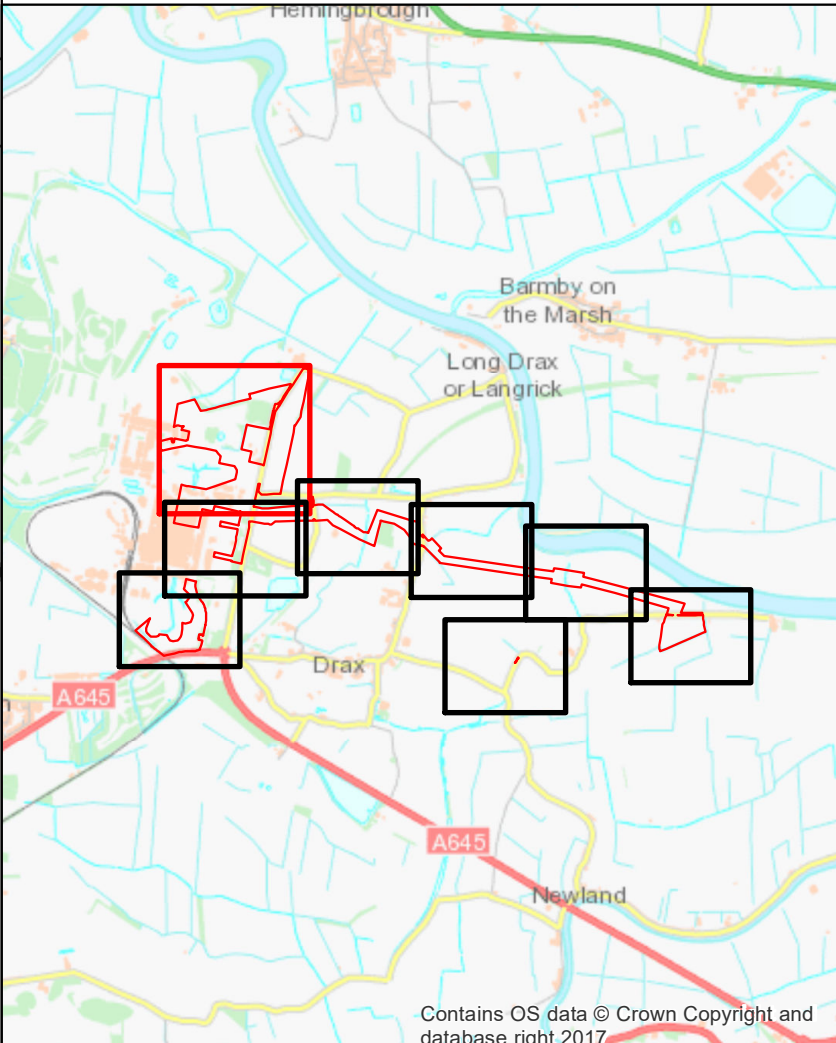
SCALE: AS SHOWN	CHECKED	SO	APPROVED	SW
PROJECT NO: 70037047	DESIGNED	TB	DRAWN	SS
DRAWING NO: 70037047-2.2-LP-Sheet1	DATE	16/05/2018	REV. NO:	01





- The Drax Power (Generating Stations) Order Land Plans Sheet 2**
- Order limits - the area within which the authorised development may be carried out
  - Order land - freehold and leasehold to be compulsorily acquired and in relation to which it is proposed to extinguish easements, servitudes and other private rights
  - Order land - new rights to be compulsorily acquired and in relation to which it is proposed to extinguish easements, servitudes and other private rights
  - Order land - land in relation to which it is proposed to permanently extinguish easements, servitudes and other private rights
  - Order land - temporary use of land and in relation to which it is proposed to suspend easements, servitudes and other private rights

Reproduced from Ordnance Survey digital map data © Crown copyright 2016. All rights reserved. Licence number 0100031673.  
© Crown copyright material is reproduced with the permission of Land Registry under delegated authority from the Controller of HMSO.  
This material was last updated in 2016 and may not be copied, distributed, sold or published without the formal permission of Land Registry. Only an official copy of a title plan or register obtained from the Land Registry may be used for legal or other official purposes.  
May contain public sector information licensed under the Open Government Licence v 3.0.



Infrastructure Planning (Applications: Prescribed Forms and Procedure) Regulations 2009 - Regulation 5(2)(i)

IPN	2003/0216	SS	The Drax Power (Generating Stations) Order	SO	SW
REV	DATE	BY	DESCRIPTION	CHK	APP

DRAWING STATUS: SUBMISSION FOR APPROVAL

Westbrook Mills, Borough Road, Godalming, GU7 2AZ, UK  
T: +44 (0) 1483 528 400, F: +44 (0) 1483 528 889  
wsp.com

CLIENT

PROJECT:

The Drax Power (Generating Stations) Order

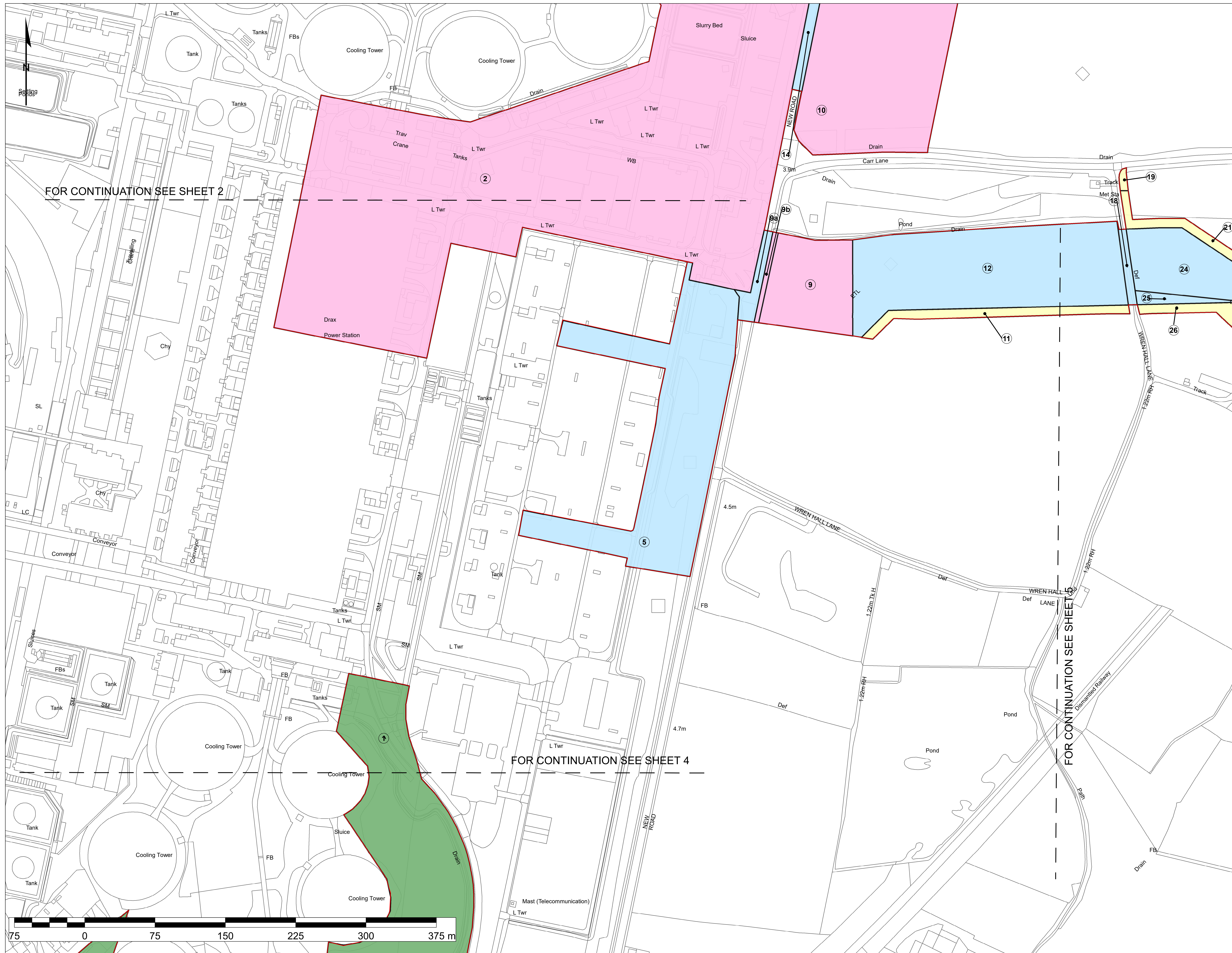
TITLE:

Application document reference 2.2  
Land Plans  
Sheet 2 of 9

SCALE: AS SHOWN	CHECKED	SO	APPROVED	SW
PROJECT NO:	DESIGNED	TB	DRAWN	DATE
70037047	16/05/2018	SS		
DRAWING NO:	70037047-2.2-LP-Sheet2			REV NO:
				01

© WSP UK Ltd





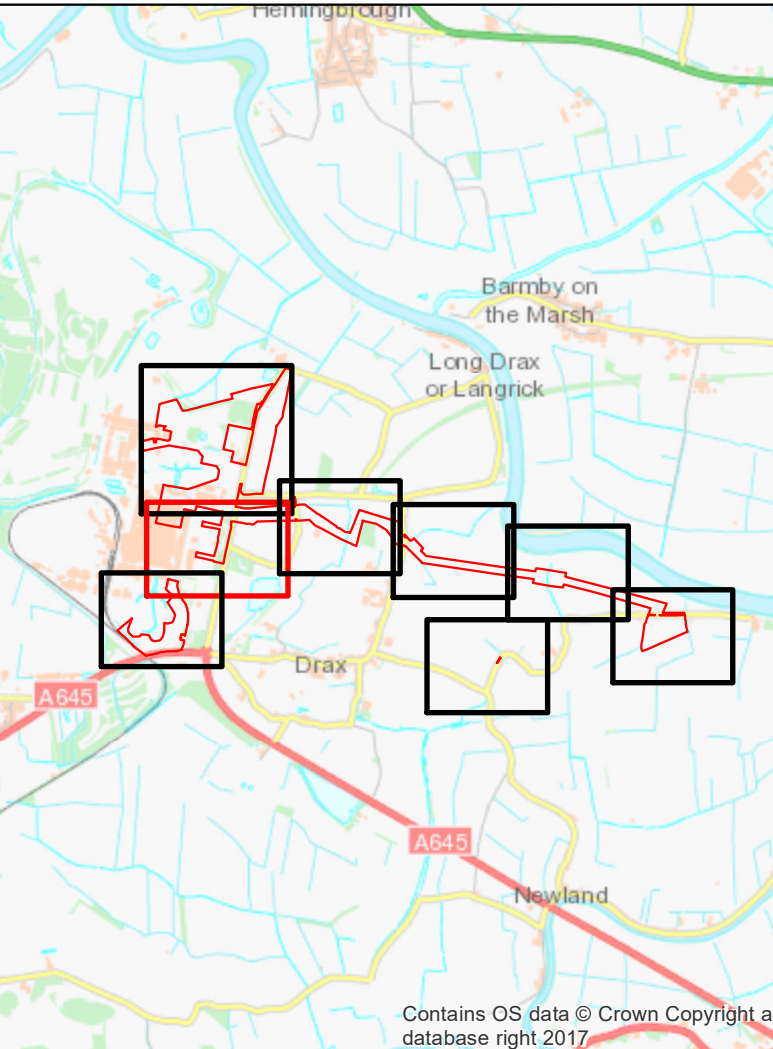
# The Drax Power (Generating Stations) Order

## Land Plans

### Sheet 3

- Order limits - the area within which the authorised development may be carried out
- Order land - freehold and leasehold to be compulsorily acquired and in relation to which it is proposed to extinguish easements, servitudes and other private rights
- Order land - new rights to be compulsorily acquired and in relation to which it is proposed to extinguish easements, servitudes and other private rights
- Order land - land in relation to which it is proposed to permanently extinguish easements, servitudes and other private rights
- Order land - temporary use of land and in relation to which it is proposed to suspend easements, servitudes and other private rights

Reproduced from Ordnance Survey digital map data © Crown Copyright 2016. All rights reserved. Licence number 1000031673.  
© Crown copyright material is reproduced with the permission of Land Registry under delegated authority from the Controller of HMSO.  
This material was last updated in 2018 and may not be copied, distributed, sold or published without the formal permission of Land Registry. Only an official copy of a title plan or register obtained from the Land Registry may be used for legal or other official purposes.  
May contain public sector information licensed under the Open Government Licence v 3.0.



Infrastructure Planning (Applications: Prescribed Forms and Procedure) Regulations 2009 - Regulation 5(2)(i)				
PG#	25032535	55	The Draft Power (Generating Stations) Order	50
REV	DATE	BY	DESCRIPTION	CHK

**DRAWING STATUS:** SUBMISSION FOR APPROVAL



Westbrook Mills, Borough Road, Godalming, GU7 2AZ, UK  
T+ 44 (0) 1483 528 400, F+ 44 (0) 1483 528 989  
wsp.com



The Drax Power  
(Generating Stations) Order

Application document reference 2.2  
Land Plans  
Sheet 3 of 9






SALE AT \$0 <b>1:1,250</b>		CHECKED: <b>SO</b>		APPROVED: <b>SW</b>	
PROJECT NO: <b>70037047</b>		DESIGNED: <b>TB</b>	DRAWN: <b>SS</b>	DATE: <b>16/05/2018</b>	
DRAWING NO: <b>70037047-2.2-LP-Sheet3</b>					REV NO: <b>01</b>

© WSP UK Ltd

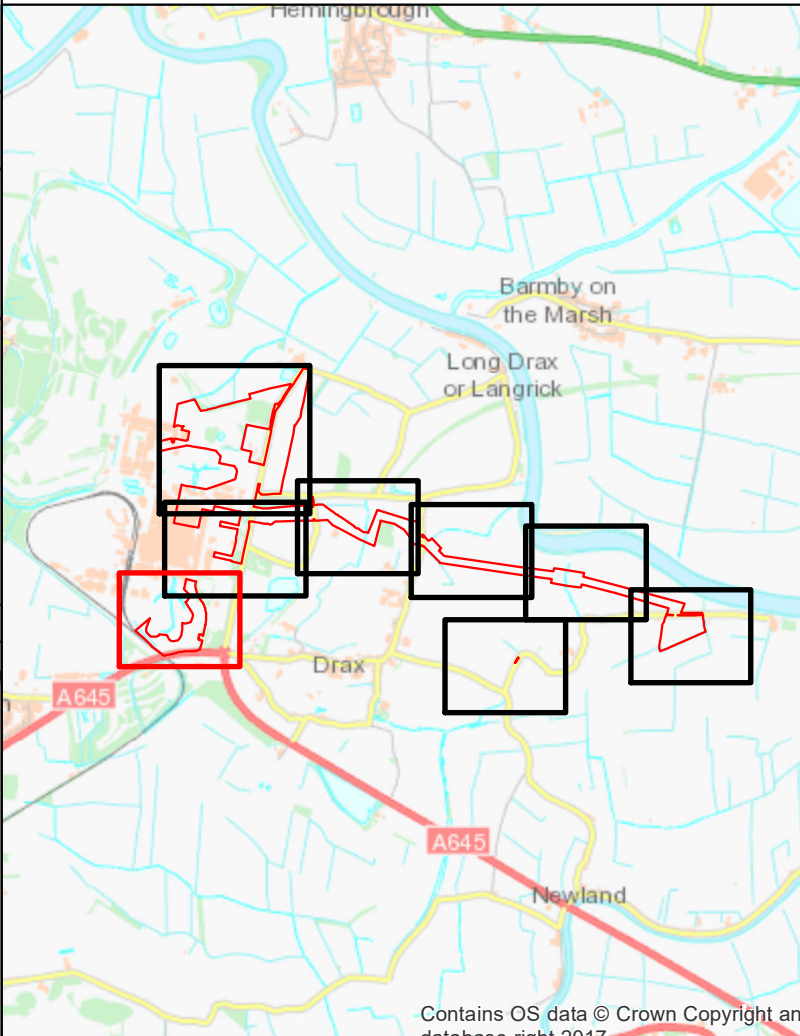




**The Drax Power (Generating Stations) Order  
Land Plans  
Sheet 4**

-  Order limits - the area within which the authorised development may be carried out
-  Order land - freehold and leasehold to be compulsorily acquired and in relation to which it is proposed to extinguish easements, servitudes and other private rights
-  Order land - new rights to be compulsorily acquired and in relation to which it is proposed to extinguish easements, servitudes and other private rights
-  Order land - land in relation to which it is proposed to permanently extinguish easements, servitudes and other private rights
-  Order land - temporary use of land and in relation to which it is proposed to suspend easements, servitudes and other private rights

Reproduced from Ordnance Survey digital map data © Crown copyright 2016. All rights reserved. Licence number 0100031673.  
© Crown copyright material is reproduced with the permission of Land Registry under delegated authority from the Controller of HMSO.  
This material was last updated in 2018 and may not be copied, distributed, sold or published with out the formal permission of Land Registry. Only an official copy of a title plan or register obtained from the Land Registry may be used for legal or other official purposes.  
May contain public sector information licensed under the Open Government Licence v 3.0.



Infrastructure Planning (Applications: Prescribed Forms and Procedure) Regulations 2009 - Regulation 5(2)(i)

PO#	26/03/2015	SS	The Drax Power (Generating Stations) Order	SD	5
REV	DATE	BY	DESCRIPTION	CHK	A

DRAWING STATUS: SUBMISSION FOR APPROVAL



Vestbrook Mills, Borough Road, Godalming, GU7 2AZ, UK  
T+ 44 (0) 1483 528 400, F+ 44 (0) 1483 528 989  
wsp.com



PROJECT:

The Drax Power  
(Generating Stations) Order

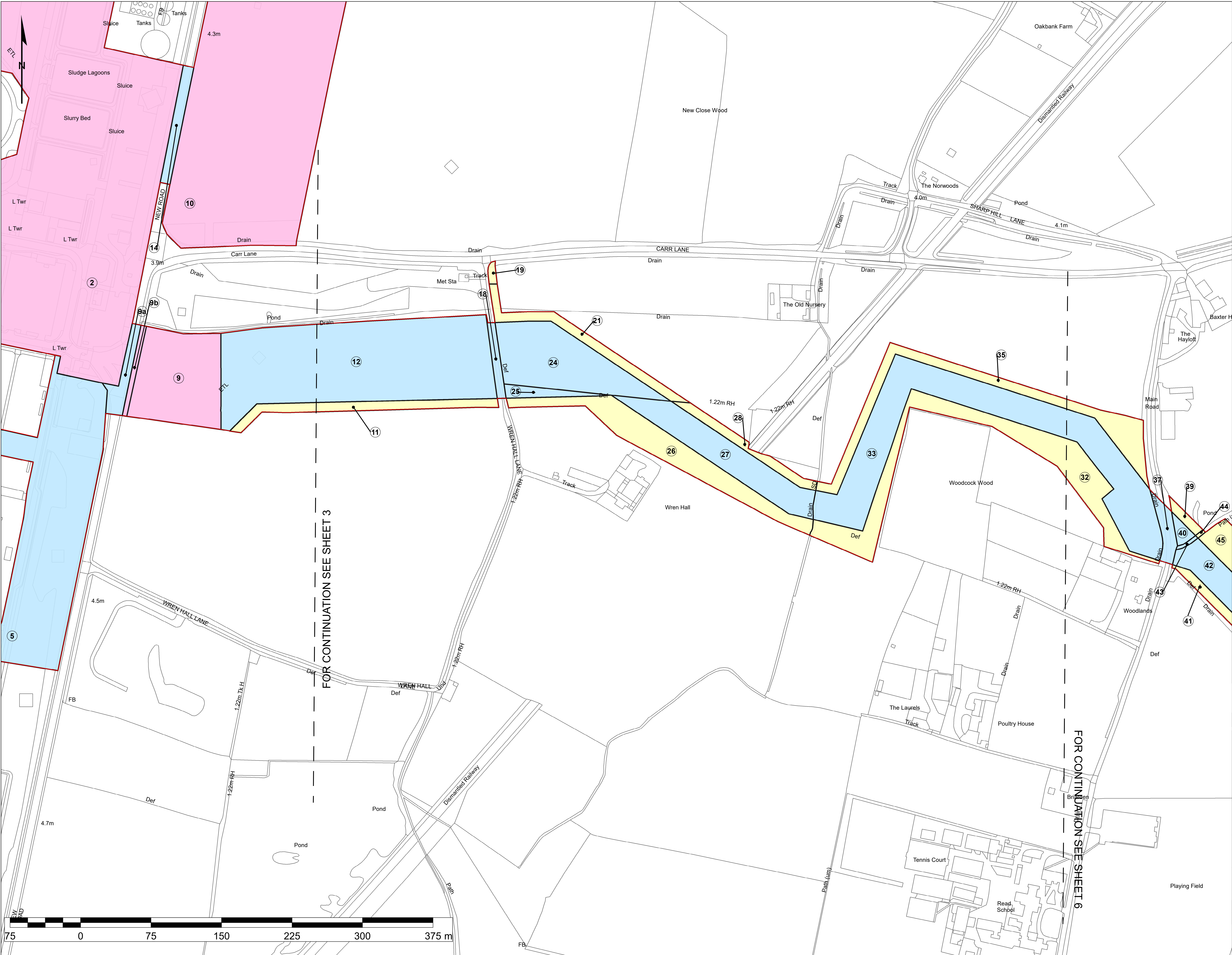
TITLE

Application document reference 2.2  
Land Plans  
Sheet 4 of 9

SCALE: AT 1:1,250	CHECKED: SO	APPROVED: SW
PROJECT NO: 70037047	DESIGNED: TB	DATE: 16/05/2018
DRAWING NO: 70037047-2.2-LP-Sheet4		REV. NO: 01

© WSP UK Ltd

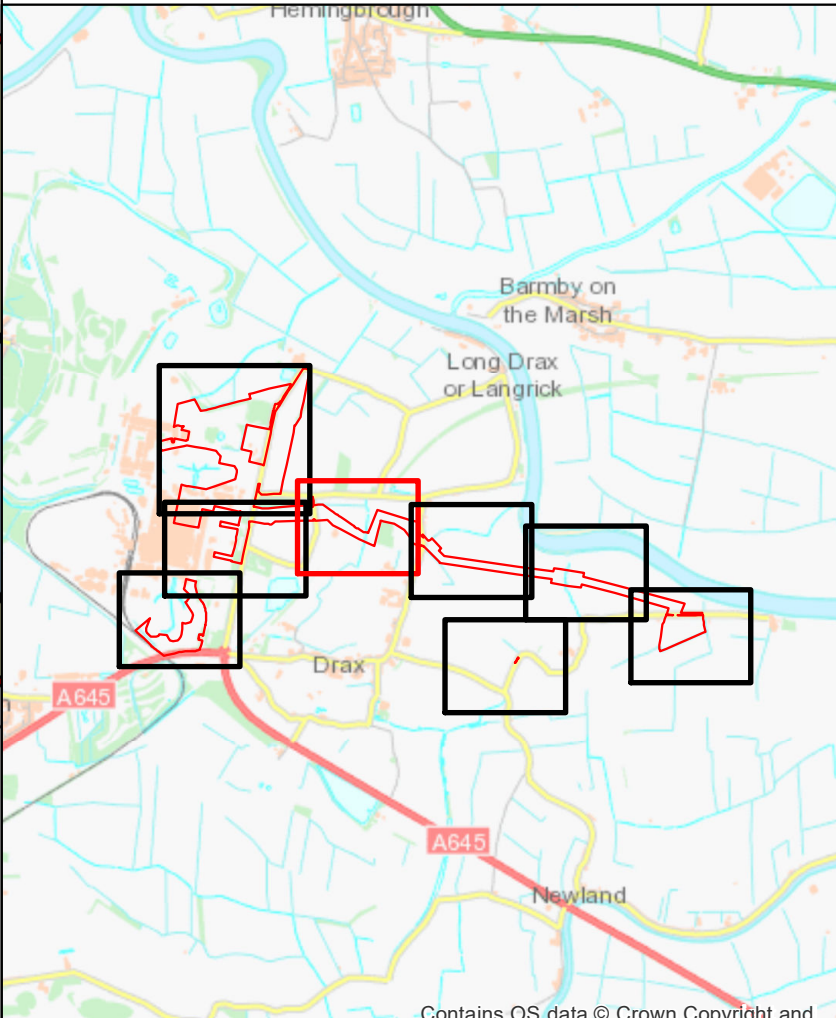




**The Drax Power (Generating Stations) Order  
Land Plans  
Sheet 5**

- Order limits - the area within which the authorised development may be carried out
- Order land - freehold and leasehold to be compulsorily acquired and in relation to which it is proposed to extinguish easements, servitudes and other private rights
- Order land - new rights to be compulsorily acquired and in relation to which it is proposed to extinguish easements, servitudes and other private rights
- Order land - land in relation to which it is proposed to permanently extinguish easements, servitudes and other private rights
- Order land - temporary use of land and in relation to which it is proposed to suspend easements, servitudes and other private rights

Reproduced from Ordnance Survey digital map data © Crown copyright 2016. All rights reserved. Licence number 0100031673.  
© Crown copyright material is reproduced with the permission of Land Registry under delegated authority from the Controller of HMSO.  
This material was last updated in 2016 and may not be copied, distributed, sold or published without the formal permission of Land Registry. Only an official copy of a title plan or register obtained from the Land Registry may be used for legal or other official purposes.  
May contain public sector information licensed under the Open Government Licence v 3.0.



Infrastructure Planning (Applications: Prescribed Forms and Procedure) Regulations 2009 - Regulation 5(2)(i)

IPU	2003/02/16	SS	The Drax Power (Generating Stations) Order	SO	SW
REV	DATE	BY	DESCRIPTION	CHK	APP

DRAWING STATUS: SUBMISSION FOR APPROVAL

Westbrook Mills, Borough Road, Godalming, GU7 2AZ, UK  
T: +44 (0) 1483 528 400, F: +44 (0) 1483 528 989  
wsp.com

CLIENT:

PROJECT: The Drax Power (Generating Stations) Order

TITLE: Application document reference 2.2  
Land Plans  
Sheet 5 of 9

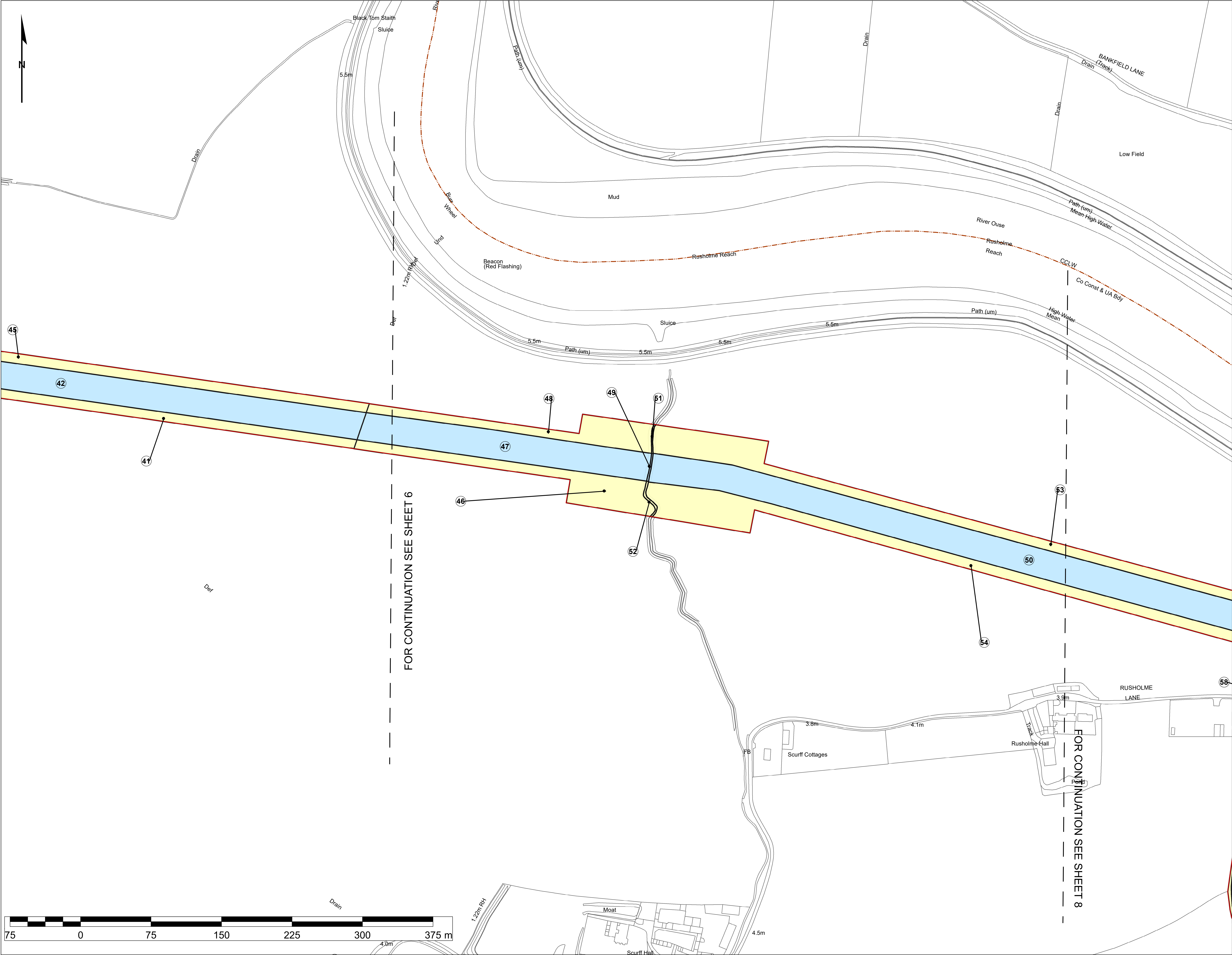
SCALE OF AS 1:1,250	CHECKED SO	APPROVED SW
PROJECT NO 70037047	DESIGNED TB	SS
DRAWING NO 70037047-2-LP-Sheet5	DATE 16/05/2018	REV NO 01

© WSP UK Ltd





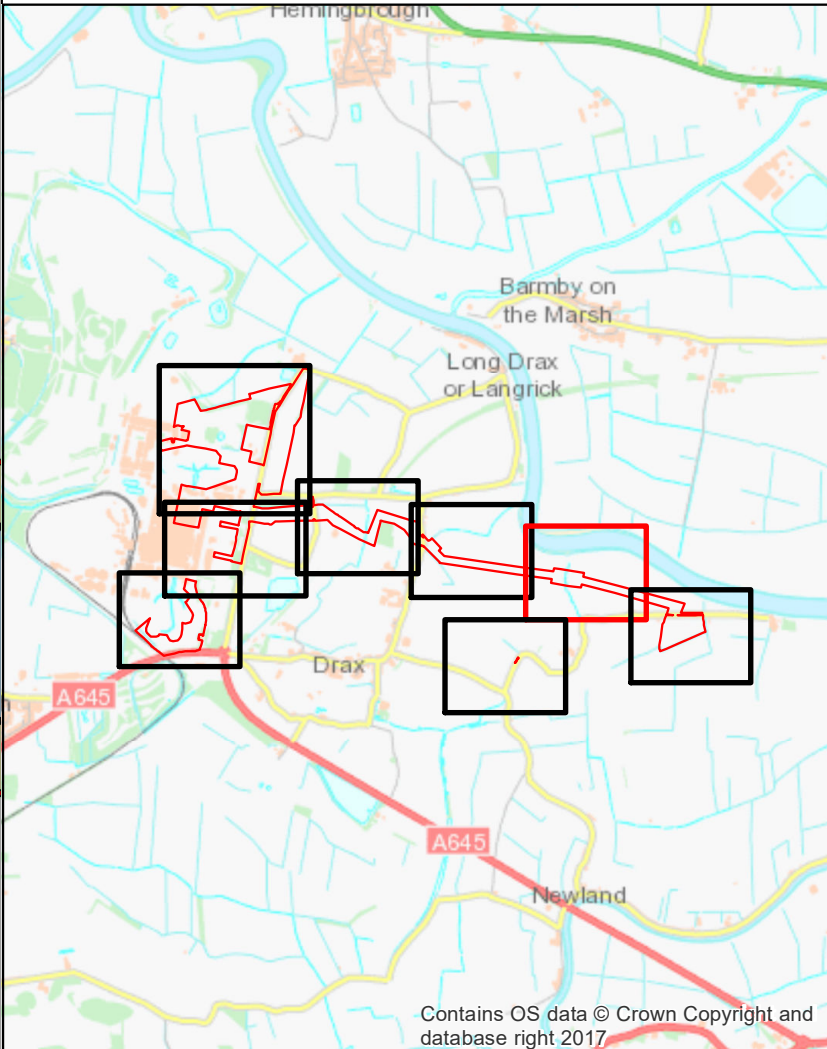




**The Drax Power (Generating Stations) Order  
Land Plans  
Sheet 7**

- Order limits - the area within which the authorised development may be carried out
- Order land - freehold and leasehold to be compulsorily acquired and in relation to which it is proposed to extinguish easements, servitudes and other private rights
- Order land - new rights to be compulsorily acquired and in relation to which it is proposed to extinguish easements, servitudes and other private rights
- Order land - land in relation to which it is proposed to permanently extinguish easements, servitudes and other private rights
- Order land - temporary use of land and in relation to which it is proposed to suspend easements, servitudes and other private rights
- District Boundary

Reproduced from Ordnance Survey digital map data © Crown copyright 2016. All rights reserved. Licence number 0100031673.  
© Crown copyright material is reproduced with the permission of Land Registry under delegated authority from the Controller of HMSO.  
This material was last updated in 2016 and may not be copied, distributed, sold or published without the formal permission of Land Registry. Only an official copy of a title plan or register obtained from the Land Registry may be used for legal or other official purposes.  
May contain public sector information licensed under the Open Government Licence v 3.0.



Infrastructure Planning (Applications: Prescribed Forms and Procedure) Regulations 2009 - Regulation 5(2)(i)

REV	DATE	BY	DESCRIPTION	CHK	APP
1	2013/02/16	SS	The Drax Power (Generating Stations) Order	SO	SW

DRAWING STATUS: SUBMISSION FOR APPROVAL

**wsp**

Westbrook Mills, Borough Road, Godalming, GU7 2AZ, UK  
T: +44 (0) 1483 528 400, F: +44 (0) 1483 528 889  
wsp.com

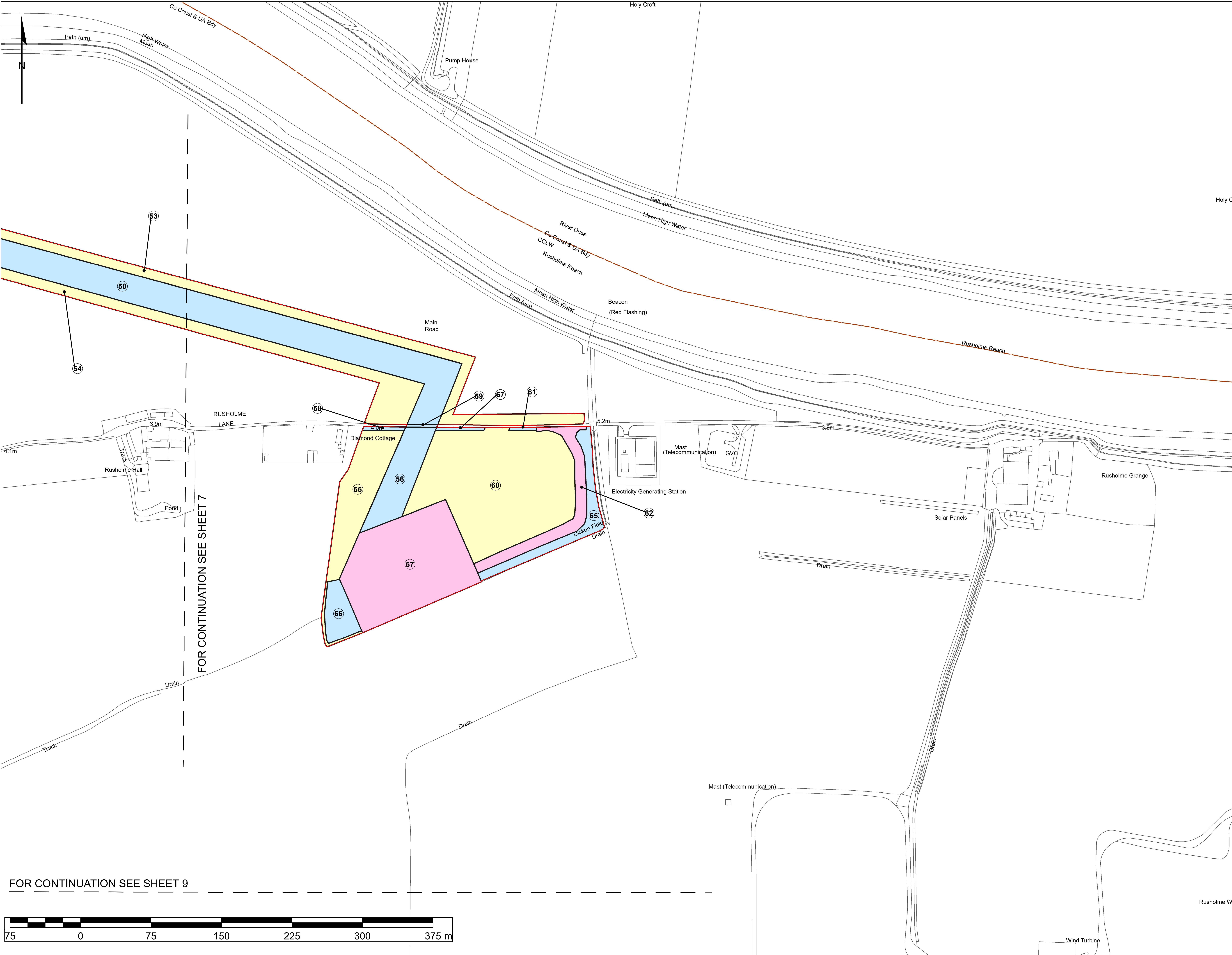


**The Drax Power  
(Generating Stations) Order**

Application document reference 2.2  
Land Plans  
Sheet 7 of 9

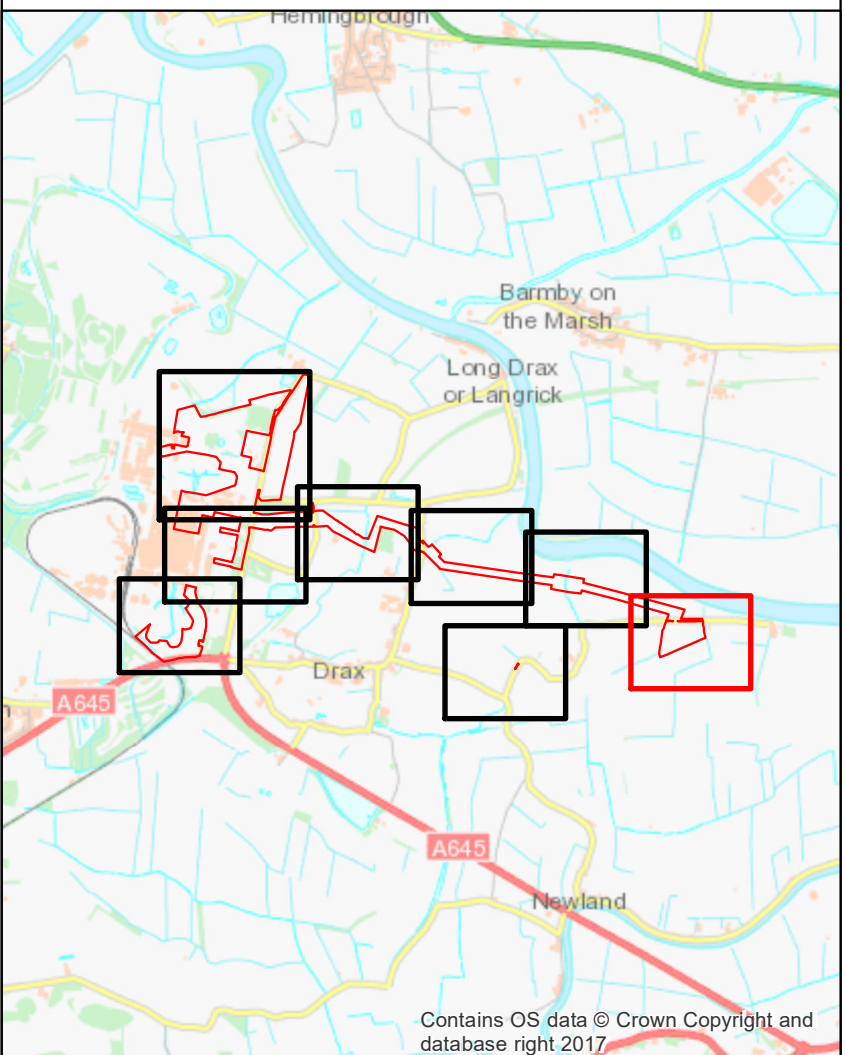
SCALE AS SHOWN 1:1,250	CHECKED SO	APPROVED SW
PROJECT NO 70037047	DESIGNED TB	DATE 16/05/2018
DRAWING NO 70037047-2.2-LP-Sheet7	DRAWN SS	REV NO 01





- The Drax Power (Generating Stations) Order Land Plans Sheet 8**
- Order limits - the area within which the authorised development may be carried out
  - Order land - freehold and leasehold to be compulsorily acquired and in relation to which it is proposed to extinguish easements, servitudes and other private rights
  - Order land - new rights to be compulsorily acquired and in relation to which it is proposed to extinguish easements, servitudes and other private rights
  - Order land - land in relation to which it is proposed to permanently extinguish easements, servitudes and other private rights
  - Order land - temporary use of land and in relation to which it is proposed to suspend easements, servitudes and other private rights
  - District Boundary

Reproduced from Ordnance Survey digital map data © Crown copyright 2016. All rights reserved. Licence number 0100031673.  
© Crown copyright material is reproduced with the permission of Land Registry under delegated authority from the Controller of HMSO.  
This material was last updated in 2016 and may not be copied, distributed, sold or published without the formal permission of Land Registry. Only an official copy of a title plan or register obtained from the Land Registry may be used for legal or other official purposes.  
May contain public sector information licensed under the Open Government Licence v 3.0.



Infrastructure Planning (Applications: Prescribed Forms and Procedure) Regulations 2009 - Regulation 5(2)(i)				
REV	DATE	BY	DESCRIPTION	CHK
1	2013/02/18	SS	The Drax Power (Generating Stations) Order	SO
2				SW

DRAWING STATUS: SUBMISSION FOR APPROVAL

**wsp**

Westbrook Mills, Borough Road, Godalming, GU7 2AZ, UK  
T: +44 (0) 1483 528 400, F: +44 (0) 1483 528 889  
wsp.com



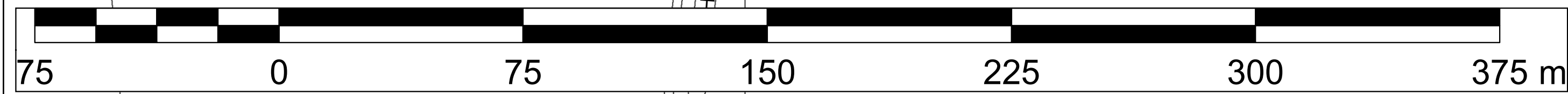
**The Drax Power (Generating Stations) Order**

Application document reference 2.2  
Land Plans  
Sheet 8 of 9

SCALE: AS SHOWN	CHECKED	SO	APPROVED	SW
PROJECT NO: 70037047	DESIGNED	TB	DRAWN	DATE
DRAWING NO: 70037047-2.2-LP-Sheet8				16/05/2018
				REV NO: 01

© WSP UK Ltd

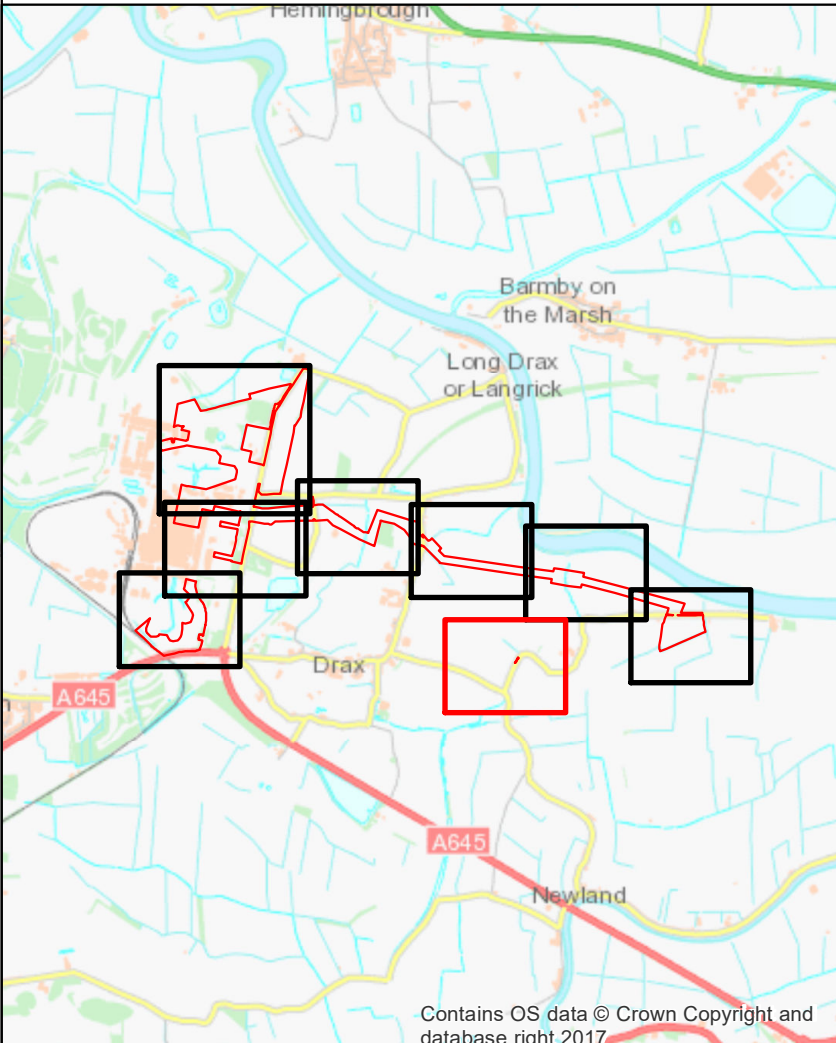




**The Drax Power (Generating Stations) Order  
Land Plans  
Sheet 9**

- Order limits - the area within which the authorised development may be carried out
- Order land - freehold and leasehold to be compulsorily acquired and in relation to which it is proposed to extinguish easements, servitudes and other private rights
- Order land - new rights to be compulsorily acquired and in relation to which it is proposed to extinguish easements, servitudes and other private rights
- Order land - land in relation to which it is proposed to permanently extinguish easements, servitudes and other private rights
- Order land - temporary use of land and in relation to which it is proposed to suspend easements, servitudes and other private rights

Reproduced from Ordnance Survey digital map data © Crown copyright 2016. All rights reserved. Licence number 0100031673.  
© Crown copyright material is reproduced with the permission of Land Registry under delegated authority from the Controller of HMSO.  
This material was last updated in 2016 and may not be copied, distributed, sold or published without the formal permission of Land Registry. Only an official copy of a title plan or register obtained from the Land Registry may be used for legal or other official purposes.  
May contain public sector information licensed under the Open Government Licence v 3.0.



ROMANO  
BRITISH FARMSTEAD  
(site of)

Infrastructure Planning (Applications: Prescribed Forms and Procedure) Regulations 2009 - Regulation 5(2)(i)

REV	2013/02/18	BY	SS	DESCRIPTION	SO	SW
REV	DATE	BY	DESCRIPTION	CHK	APP	

DRAWING STATUS: SUBMISSION FOR APPROVAL

Westbrook Mills, Borough Road, Godalming, GU7 2AZ, UK  
T: +44 (0) 1483 528 400, F: +44 (0) 1483 528 889  
wsp.com

CLIENT

PROJECT:  
The Drax Power  
(Generating Stations) Order

TITLE:  
Application document reference 2.2  
Land Plans  
Sheet 9 of 9

SCALE OF AS 1:1,250	CHECKED SO	APPROVED SW
PROJECT NO 70037047	DESIGNED TB	DRAWN SS
DATE 16/05/2018		REV NO 01

DRAWING NO:  
70037047-2.2-LP-Sheet9

© WSP UK Ltd